

# TBI-TRS45 - Linear Guides

FEATURES

- **Size: 45mm Linear Guide Rail**
- **Dynamic Load: Up to 86.8 kN**
- **Static Load: Up to 157 kN**
- **Rail Lengths Up to 4 Meters**
- **Custom Rail Sizes Available**
- **Matched Bearing Blocks**
- **End-Seal Options: Standard or Reinforced**
- **Pre-Load: Clearance, Standard, or Light**



DESCRIPTION

TBI's high-quality linear guides deliver precision, durability, and affordability in one single package! Available in a 45mm size, this sleek, high-quality design incorporates the rail and the block together to provide a convenient, easy-to-use product. Little friction resistance allows for high accuracy and speed, while several preload options are available for increased rigidity and performance. They are offered in standard or custom lengths, and are ideal for dynamic loads up to 86.8 kN and static loads up to 157 kN. All standard blocks come with a bottom seal and double lip end seals.

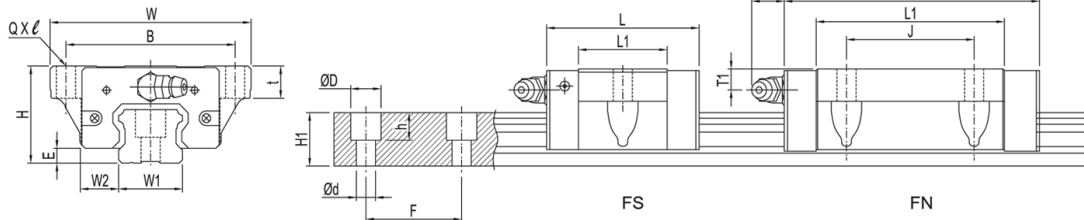
SPECIFICATIONS

Block Part Number	Fabrication Dimensions (mm)			Block Dimensions (mm)								Load Capacities (kN)		Static Moment (Nm)			Weight (lbs)
	H	W <sub>2</sub>	E	W	B	J	L	L1	QxL	T	N	C	C <sub>0</sub>	M <sub>x</sub>	M <sub>y</sub>	M <sub>z</sub>	
TBI-TRS45VN-N-Z0	60	20.5	8.9	86	60	60	124.5	90.5	M10x15	10.5	12.5	66.3	106.8	2439.5	1549.6	1549.6	3.8

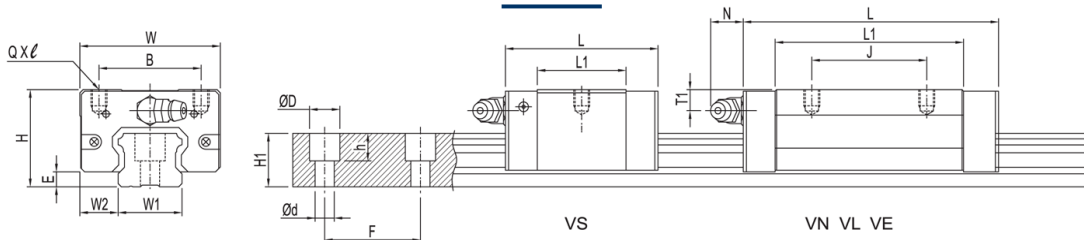
Rail Part Number	Rail Dimensions (mm)							Rail Length (mm)	Weight (lbs)
	W <sub>1</sub>	H <sub>1</sub>	F	D	d	d x D x h			
TBI-TR45N-0300-45-45	45	32	105	20	14	14 x 20 x 17	300	6.9	
TBI-TR45N-0500-40-40	45	32	105	20	14	14 x 20 x 17	500	11.5	
TBI-TR45N-0700-35-35	45	32	105	20	14	14 x 20 x 17	700	16.1	
TBI-TR45N-0900-30-30	45	32	105	20	14	14 x 20 x 17	900	20.6	
TBI-TR45N-1100-25-25	45	32	105	20	14	14 x 20 x 17	1100	25.2	
TBI-TR45N-1300-20-20	45	32	105	20	14	14 x 20 x 17	1300	29.8	
TBI-TR45N-1500-15-15	45	32	105	20	14	14 x 20 x 17	1500	34.4	
TBI-TR45N-1710-15-15	45	32	105	20	14	14 x 20 x 17	1710	39.2	
TBI-TR45N-1900-57.5-57.5	45	32	105	20	14	14 x 20 x 17	1900	43.6	
TBI-TR45N-2100-52.5-52.5	45	32	105	20	14	14 x 20 x 17	2100	48.2	
TBI-TR45N-2300-47.5-47.5	45	32	105	20	14	14 x 20 x 17	2300	52.7	
TBI-TR45N-2500-42.5-42.5	45	32	105	20	14	14 x 20 x 17	2500	57.3	
TBI-TR45N-2700-37.5-37.5	45	32	105	20	14	14 x 20 x 17	2700	61.9	
TBI-TR45N-2900-32.5-32.5	45	32	105	20	14	14 x 20 x 17	2900	66.5	
TBI-TR45N-3100-27.5-27.5	45	32	105	20	14	14 x 20 x 17	3100	71.1	
TBI-TR45N-3300-22.5-22.5	45	32	105	20	14	14 x 20 x 17	3300	75.7	
TBI-TR45N-3500-17.5-17.5	45	32	105	20	14	14 x 20 x 17	3500	80.3	
TBI-TR45N-3705-15-15	45	32	105	20	14	14 x 20 x 17	3705	85.0	
TBI-TR45N-3900-60-60	45	32	105	20	14	14 x 20 x 17	3900	89.4	
TBI-TR45N-4000L	45	32	105	20	14	14 x 20 x 17	4000	91.7	

L011030

**TRS-F**



**TRS-V**



**Force Diagram**

